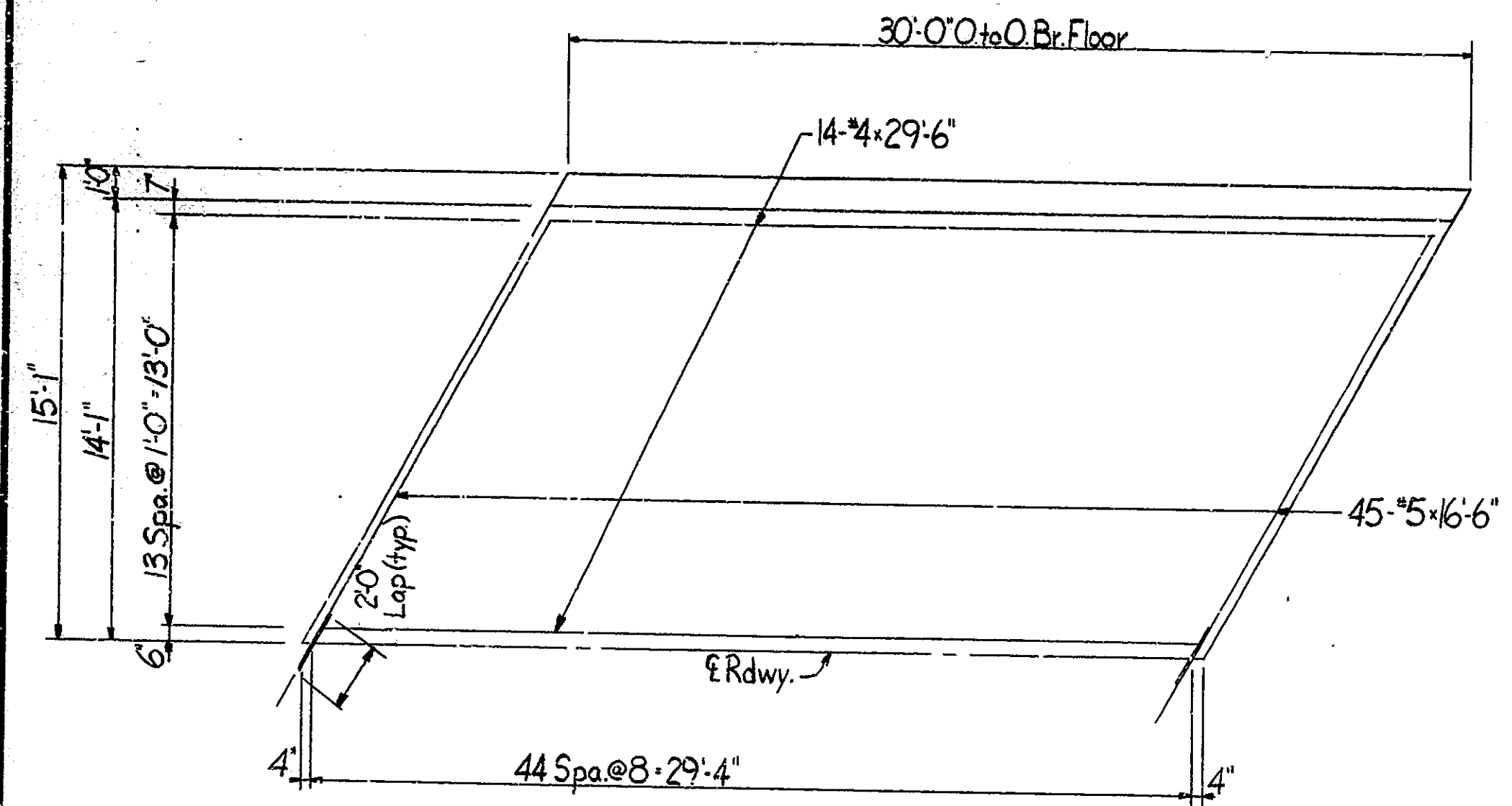
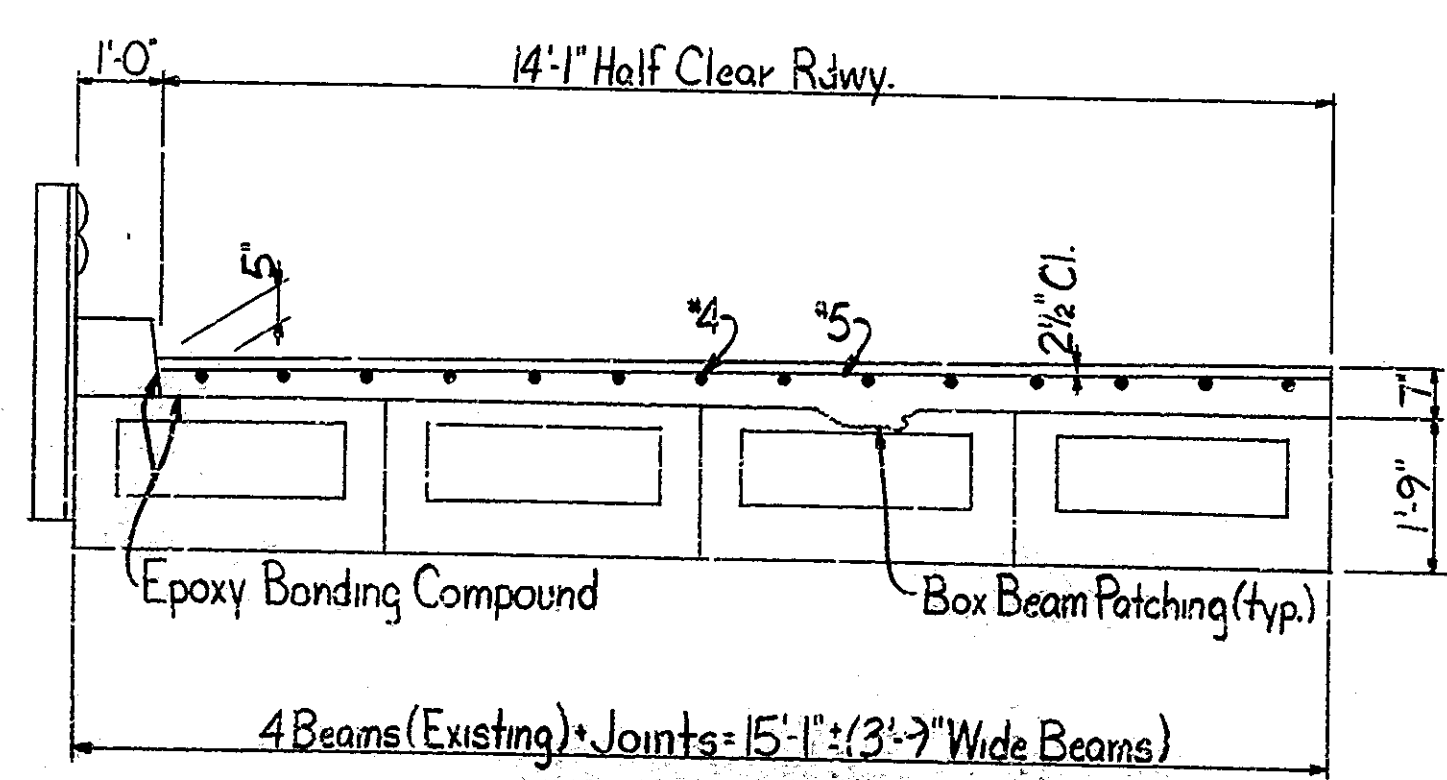


150'-0" (Taper Back to Existing Pavmt. Width)

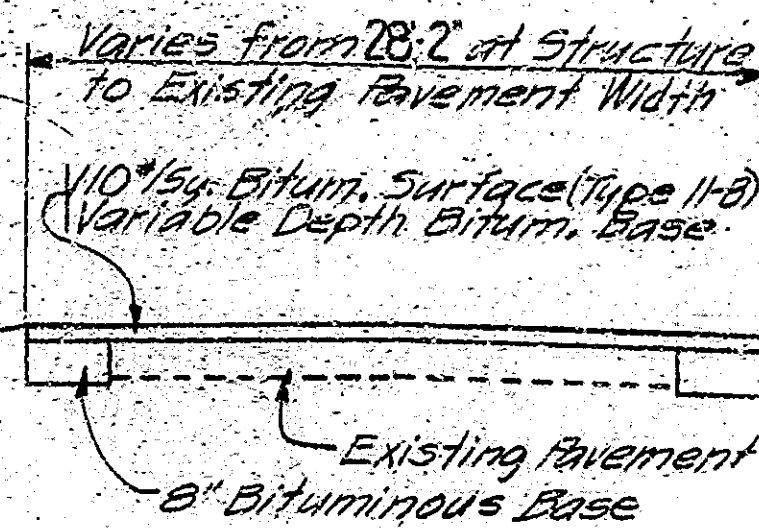
BITUMINOUS TAPER



HALF PLAN
Scale: None



HALF SECTION
Scale: 1/2" = 1'-0"



TYPICAL APPROACH SECTION

GENERAL NOTES

Reinforcing Steel covering shall be 2 1/2 inches in top of floor slab.
 Where new work is to be fitted to old work, the Contractor shall check all dimensions and conditions in the field and report any errors or discrepancies to the Engineer and assume responsibility for their correctness and the fit of new part to old.
 The top of floor slab and the inside face and top of existing curbs to be surface sealed.
 All reinforcing steel to be Epoxy Coated.
 The deck reinforcing steel shall be securely tied down to prevent lifting during concrete placement.
 The Class C concrete slab is to be bonded to the cleaned beam surface with an epoxy bonding compound.
 Any beams so indicated on these plans are to be replaced. If necessary, adjacent beams will be removed and reset. Any deteriorated tie rods or dowels or any damaged in the removal process will be replaced by the Contractor. All grout joints between beams which are disturbed by the removal and replacement will be cleaned and repoured. The existing bearing devices are to be reused.
 All above items are to be included in the Lump Sum bid price for Concrete Structural Members.
 The locations of tie rod holes, and the exact length and skew of the beams to be replaced will be determined in the field by the Contractor and this information will be furnished in writing to the fabricator and to the ISHC Bridge Design Section. The beams will be manufactured, shipped and installed in accordance with the Standard Specifications and applicable ISHC Standard Drawings.
 The removal of bituminous surface and the concrete scarifying shall be accomplished in such a manner that no damage will occur to any beams and excess concrete will not be removed from any beams.
 Where exterior beams are to be replaced, the existing railing is to be removed and reset on new beams. Cost to be included in Concrete Structural Members.
 The new beams shall match the existing beams, in depth & width. Top of new beams to be given a rough broom finish normal to F. of roadway.

INDEX

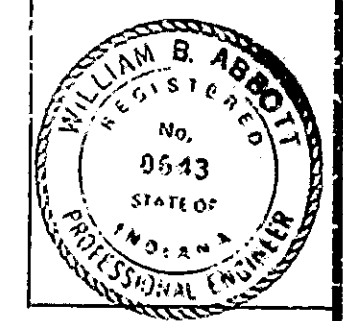
SHEET NO.	SHEET DESIGNATION	SUBJECT	DATE
1	R1	Title Sheet & General Plan	
2	C1	Reinf. Bar Notes, Bar bending	6-1-77
	PB6	Prestressed Box Beams	
	PB	Prest. Box Beams, Hair Comp.	Wide
	PE		
	PB 10	Tolerances for Prest. Beams	
3	Det. Sh. 1	Standard Detour Signs	10-1-79
4	Det. Sh. 2	Standard Detour Signs	8-1-79
5	Det. Sh. 2A	Standard Barricades	8-1-79
6	Det. Sh. 3	Standard Detour Signs	4-1-77
7	Det. Sh. 4	Standard Detour Signs	4-1-77
8	Det. Sh. 9	Traffic Sign Details	4-1-79
9	CBE	Temporary Concrete Barrier	11-1-79

ESTIMATE OF QUANTITIES

CODE	ITEM	UNIT	QUANTITY
51002	Concrete, Class C in Superstructure	CYS.	15.7
51032	Epoxy Coated Reinforcing Steel	LBS.	2101
51045	Concrete Structural Members	L5UM	—
51328	Removal of Present Structure (Beams)	L5UM	—
52413	Bituminous Surface Removal	SYS.	94
51833	Concrete Scarifying	SYS.	94
51837	Blasting and Cleaning	SYS.	94
	Box Beam Patching	SFT.	20
51026	Surface Seal	SFT.	980
52470	Bituminous Mixture for Approaches	TON	141
52340	Construction Signs (Type A)	EACH	
52345	Construction Signs (Type B)	EACH	
	Standard Barricades (Type IV)	EACH	2
52456	Bitum. Material for Tack Coat	SYS.	803
	Maintaining Traffic	EACH	1

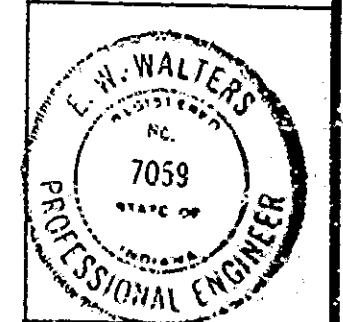
RECOMMENDED FOR APPROVAL 10-22-79

William B. Mott
 ASSISTANT ENGINEER OF BRIDGE DESIGN
 INDIANA STATE HIGHWAY COMMISSION



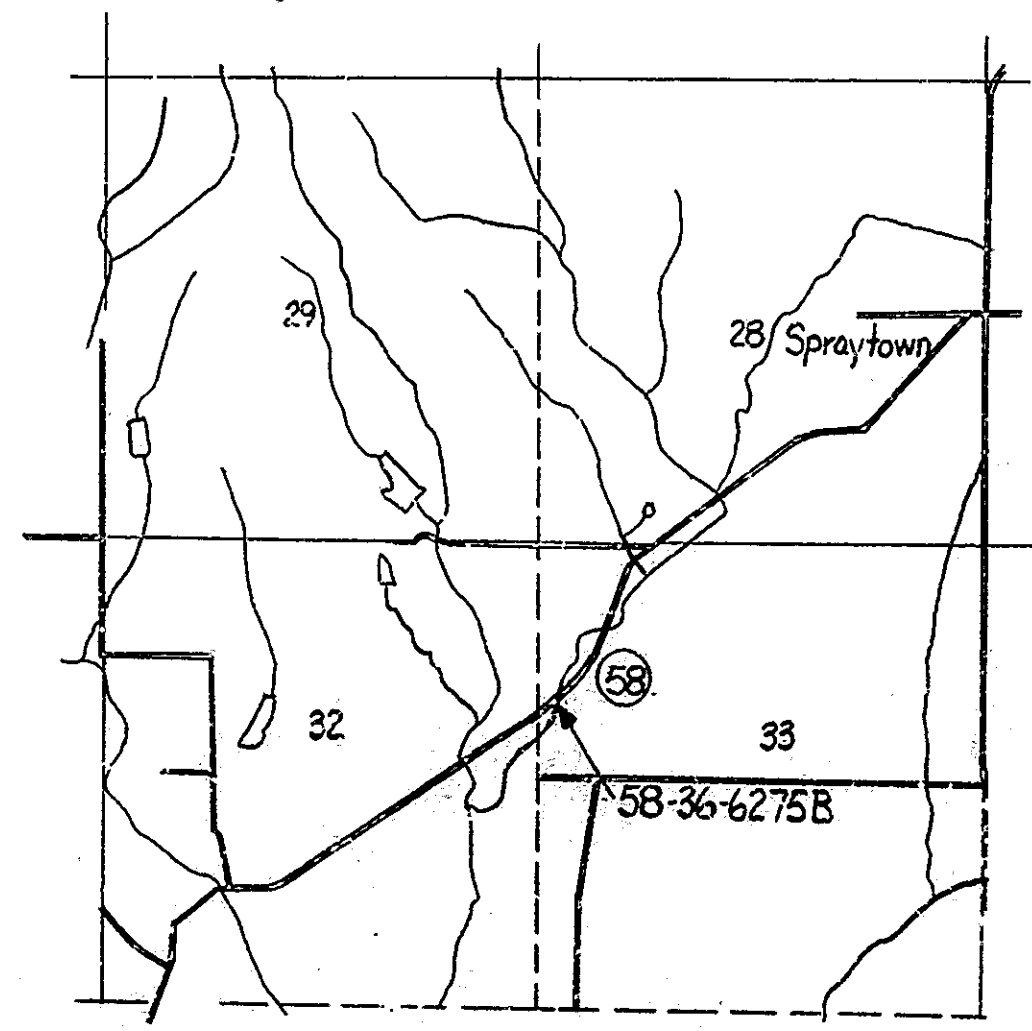
RECOMMENDED FOR APPROVAL 11-29-79

E. W. Walters
 ENGINEER OF BRIDGE DESIGN
 INDIANA STATE HIGHWAY COMMISSION



APPROVED 11-30-79

G. V. Hall
 CHIEF HIGHWAY ENGINEER
 INDIANA STATE HIGHWAY COMMISSION



LOCATION PLAN
Scale: 1" = 2000'

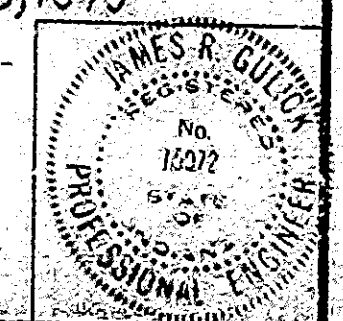
1.7 miles E. of S.R. 258

TITLE SHEET & GENERAL PLAN
 REPAIRS TO PRESTRESSED BOX BEAM BRIDGE
 1 SPAN @ 30'-0" SKEW 30° R. 28'-2" ROADWAY
 OVER NO NAME CREEK ON SR 58
INDIANA STATE HIGHWAY COMMISSION
 JACKSON COUNTY

SCALE: AS NOTED DATE: AUGUST 28, 1979

James P. Schick
 SENIOR DESIGNER

DRAWING: R1 OF PROJECT: ST-5036 (A) SHEET: 1 OF 1
 CONTRACT NO. B-12443
 BRIDGE FILE: 58-36-6275 B



DESIGNED: J.R. B...
 DRAWN: J.R. B...
 CHECKED: ...
 TRACED: ...

Rev. 3-26-80 Estimate of Quantities